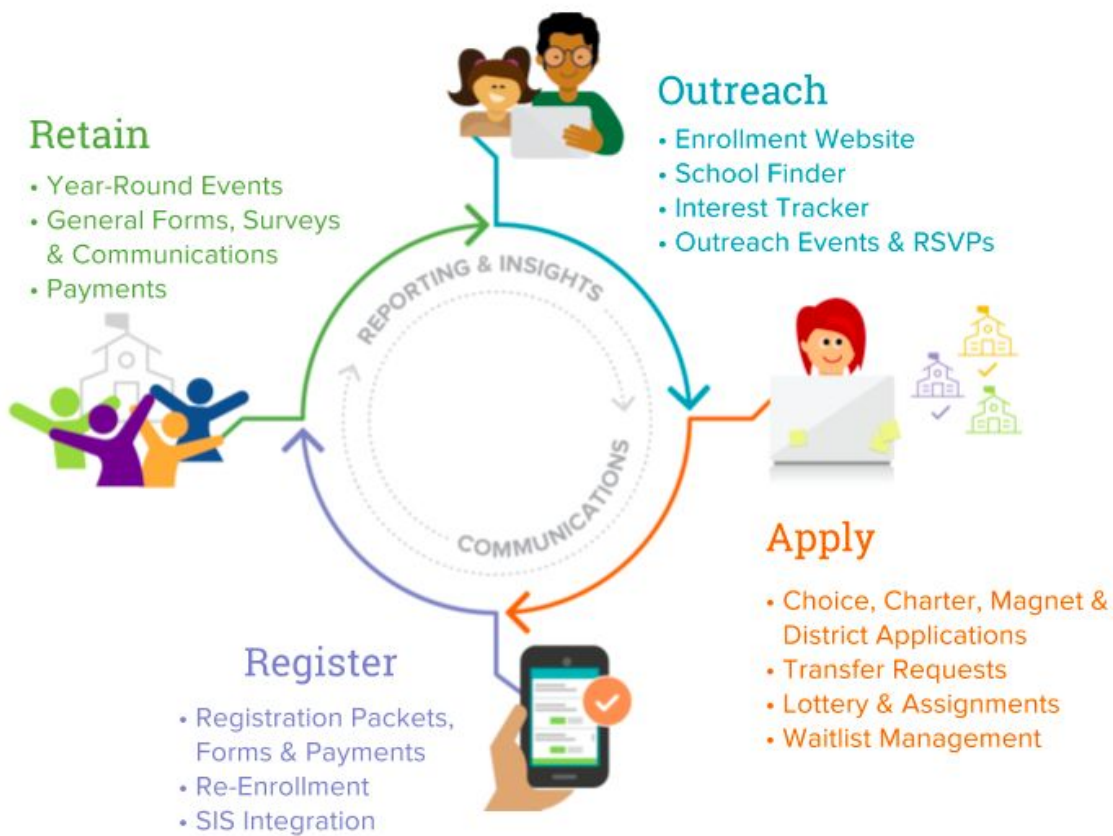


SchoolMint

for WSIPC

SchoolMint - a strategic enrollment management platform for PreK-12 school systems.

SchoolMint is thrilled to partner with WSIPC to streamline school choice and enrollment for districts and charter schools across Washington, Idaho, Montana, Alaska, and Oregon. WSIPC's member districts are well aware of the inefficiencies associated with paper-based enrollment. As school enrollment becomes more complex due to choice schools/programs and more flexible open enrollment policies, districts are feeling these pain points more acutely than ever. That is why close to 6,000 schools nationwide have selected SchoolMint to streamline all aspects of student enrollment, from family outreach to applications and lotteries, new and returning student registration, and year-round engagement and retention.



SchoolMint Impact:

Our customers include close to 6000 schools in 100+ cities, with a fast-growing number of partners across the WSIPC service area, including:



SchoolMint can support WSIPC’s member organizations in several important ways:

Improving the Parent/Guardian Experience:

- Engage with prospective families and understand their preferences before they walk in the door
- Communicate with parents easily through voice, text, & email messaging across multiple devices
- Give parents real-time access to their student’s latest school enrollment status from their phones
- Provide a friendly user interface to save parents time and minimize redundant inquiries

Expanding Equity, Access, and Transparency in the Enrollment Process:

- Support a multilingual enrollment process (in up to 20 languages)
- Use mobile (web and app) to reach families without computers and internet at home
- Build trust and transparency with stakeholders through real-time data and a complete audit trail
- Provide a more accessible open enrollment, school/program choice, and transfer experience

Promoting Revenue Sustainability through Marketing, Branding, & Promotion:

- Increase public awareness of the strengths of your district, schools, and programs
- Easily manage parent outreach and events with automated or scheduled messages and rsvps
- Track and achieve enrollment targets to ensure predictable, healthy district and school budgets

Streamlining Operations and Administrative Workflows:

- Optimize enrollment through an automated, customized, end-to-end process
- Reduce costs associated with print, postage, and storage of excess documentation
- Improve data integrity and avoid duplicative and incorrect data entry from manual process
- Generate clear documentation and maintain an audit trail throughout the enrollment process
- Maintain data accuracy with SchoolMint-SIS data integrations¹

Accessing Data Real-time for Reliable Enrollment Data Forecasting

- Generate reliable, real-time data & analytics/reports to inform key operational/budget decisions
- Monitor students as they move through each stage of the application and registration process
- Gain insight into recruiting/retaining students at key grade-level transitions (e.g. 8th to 9th grade)
- Improve enrollment outreach & capture shifting population and choice trends earlier in the year

"The application process has gone without a hitch from the applicant's side. We have... received overwhelmingly positive feedback from both parents and staff about the process."

— Wendi Russell, Vancouver Public Schools, WA

Awards:



INTERESTED TO LEARN MORE?

Register for an upcoming webinar here: [schoolmint.com/webinar-index/](https://www.schoolmint.com/webinar-index/)
Speak to one of our enrollment specialists: <https://www.schoolmint.com/demo-signup-page/>

¹ SchoolMint integrates with leading student information systems including Skyward, PowerSchool, eSchoolPlus, Chalkable, Aeries, Aspen, Illuminate, Alma and others to ensure a smooth implementation experience.