

MAKING THE CLASSROOM SAFE



AC-CLEAN

Disinfects up to 99.9%
of bacteria from Laptops,
Tablets, Headphones,
VR Headsets & more

Configurable UVC Sanitizing Cabinet



DISINFECTING MADE EASY

Using Ultraviolet (UVC) light, the AC-CLEAN is designed to disinfect up to 99.9% of bacteria from Laptops, Tablets, Headphones, VR Headsets and other shared classroom products.

- No Hazardous Chemicals
- UVC Surface Disinfection Process
- Sanitizes Exposed Surfaces
- Medical Grade Stainless Steel Racks
- 360° Reach - Eight Lamps & Reflective Lining Virtually Eliminate Blind Spots
- Electro-Magnetic Latch System
- Highly Reflective Interior

| | |
|--------------------------|----------|
| # OF 15" DEVICES | 12 |
| INTERIOR DIMENSIONS (IN) | 16.25 W |
| | 20.375 D |
| | 15.25 H |

| | |
|--------------------------|--------|
| EXTERIOR DIMENSIONS (IN) | 25 W |
| | 21.7 D |
| | 19.7 H |

| | |
|-----------------------|----|
| PRODUCT WEIGHT (LBS) | 75 |
| SHIPPING WEIGHT (LBS) | 90 |

Specifications subject to change without notice.
81120

MAKING THE CLASSROOM SAFE



AC-CNC-18

Charges & Disinfects up to 99.9% of bacteria from Chromebooks*, Laptops* Tablets or Phones.

18 Bay Charge & UVC Sanitizing Cabinet



UVC
Germicidal



Safe to
Operate



360°
Sanitation

*Must open 180 degrees (lay flat)



CHARGING + DISINFECTING

- Medical Grade Stainless Steel Racks
- 360° Reach - Eight Lamps & Reflective Lining Virtually Eliminate Blind Spots
- Locker Power Adapter Storage Area with Removable Top Panel
- Integrated Cable Management

DISINFECTING MADE EASY

Using Ultraviolet (UVC) light, the AC-CNC-18 is designed to disinfect up to 99.9% of bacteria from Chromebooks, Laptops or Tablets.

- No Hazardous Chemicals
- UVC Surface Disinfection Process
- Sanitizes Exposed Surfaces

| | | | |
|--------------------------|---------|--------------------------|---------|
| # OF DEVICES | 18 | EXTERIOR DIMENSIONS (IN) | 28.11 W |
| DEVICE SPACING (IN) | 1.18 | | 17 D |
| INTERIOR DIMENSIONS (IN) | 15.25 D | | 27.44 H |
| | 18.53 H | | |

| | |
|-----------------------|-----|
| PRODUCT WEIGHT (LBS) | TBA |
| SHIPPING WEIGHT (LBS) | TBA |

Specifications subject to change without notice.
90120

MAKING DEVICE STORAGE EASY



AC-VERT-24

Designed to charge,
store and secure
24 Chromebooks,
Laptops or Tablets

24 Device Secure Charging Tower



24 Devices



Basic Charging



Secure



- Full Metal Construction
- Wall or Stand (Optional) Mountable
- 3-Point Locking Door with Padlock Loop
- Door Folds 270° To The Side
- Heavy Duty Door Hinges
- Secure Locking Power Adapter Area
- Removable AC Adapter Mounting Plates
- Ships Fully Assembled
- Lifetime Frame Warranty

DIMENSIONS

Height: 39.5"
Width: 18"
Depth: 15"

CAPACITY

Shelf Spacing: 1.1"

WEIGHT

Product Weight: 77 lbs.
Shipping Weight: 82 lbs.



Specifications subject to change without notice.
10120

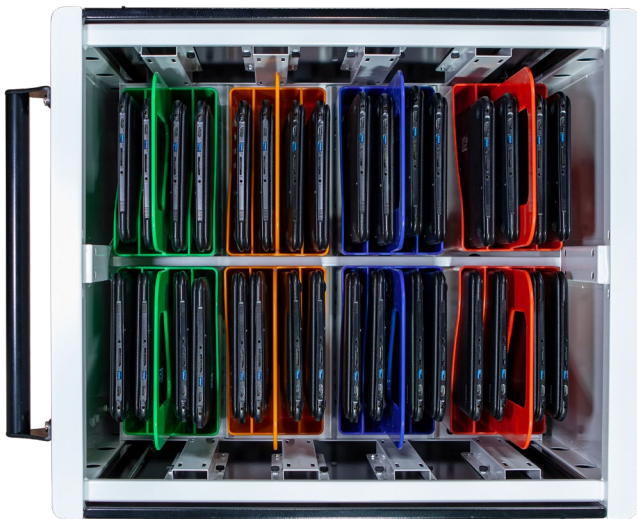


AC-GO

Designed to charge
and store up to
32 Chromebooks,
Laptops or Tablets

32 Device Smart Charging Cart

 32 Devices
 Smart Charging
 Baskets



- Heavy Gauge Full Metal Construction
- Intelli-Sense Smart Charging System
- Multi-Point Locking Top Doors
- 8 Carry Out Baskets Holding 4 Devices Each
- Integrated Cable Management Guides
- Easy Access Power Adapter Area
- Removable AC Adapter Baskets
- 4" Swivel / Directional / Lock Casters
- Ships Fully Assembled (except handle)
- Lifetime Frame Warranty

DIMENSIONS

Height: 37"
Width: 29"
Depth: 26"

CART CAPACITY

Device Spacing: 1.18"
Basket Depth: 14.5"
Basket Height: 11.5"

WEIGHT

Product Weight: 199 lbs.
Shipping Weight: 205 lbs.

Specifications subject to change without notice.
92520



AC-GO-16

Designed to charge and store up to 16 Chromebooks, Laptops or Tablets

16 Device Charging Cabinet



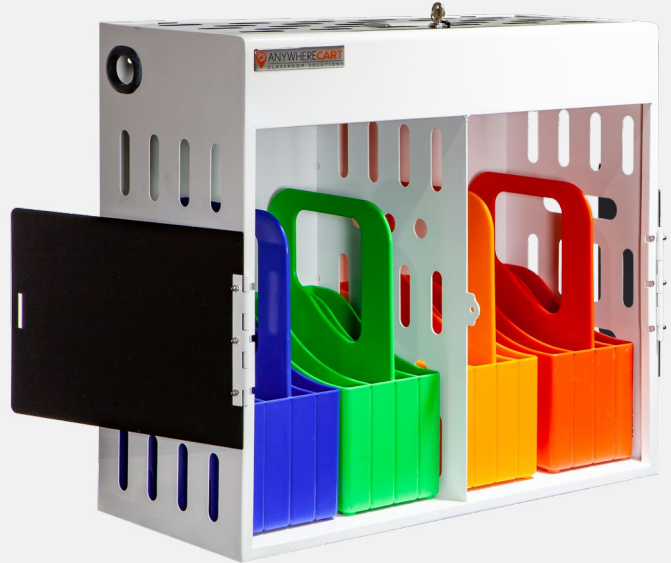
16 Devices



Basic Charging



Baskets



- Full Metal Construction
- Desk or Wall Mountable
- Center Divider with Padlock Loop
- Vented Sides For Heat Dissipation
- Cable Management
- Basic Charging with 2 Power Strips
- Secure Locking Power Adapter Area
- Ships Fully Assembled
- Lifetime Frame Warranty

DIMENSIONS

| | |
|---------|--------|
| Height: | 24.25" |
| Width: | 25.63" |
| Depth: | 11.50" |

CAPACITY

| | |
|--------------------|---|
| Number of Baskets | 4 |
| Devices per Basket | 4 |

WEIGHT

| | |
|------------------|---------|
| Product Weight: | 53 lbs. |
| Shipping Weight: | 56 lbs. |

Specifications subject to change without notice.
92420

MAKING THE CLASSROOM EFFICIENT



AC-SLIM

Designed to charge, store and transport up to 36 Chromebooks, Laptops or Tablets up to 14 inches.

36 Bay Full Featured Secure Smart Charging Cart



36 Devices



Smart Charging



Secure



Shown Pre-Wired (Optional)



Shown Pre-Wired (Optional)

- UL Certification 60950-1
- Intelli-Sense Smart Charging System
- 10 & 12 Gauge Full Metal Construction
- 3-point Locking Doors w/ Padlock Loops
- External Power outlets (2) and USB Charge Ports (2)
- Adjustable Device Dividers from 1.18" up to 2.6" Wide
- Integrated Cable Management w/ Cable Clips
- Removable AC Adapter Baskets
- 5" Swivel / Directional / Lock Casters
- Ships Fully Assembled (except handle)
- Lifetime Frame Warranty

DIMENSIONS

| | |
|---------|-----|
| Height: | 44" |
| Width: | 26" |
| Depth: | 26" |

CART CAPACITY

| | |
|------------------|---------|
| Divider Spacing: | 1.18" |
| Shelf Depth: | 14.375" |
| Shelf Height: | 10.5" |

WEIGHT

| | |
|------------------|----------|
| Product Weight: | 192 lbs. |
| Shipping Weight: | 207 lbs. |

Specifications subject to change without notice.
92520

AC-LITE-PW45

Pre-Wired and designed to charge, store and transport 30 USB-C Chromebooks or Tablets.

Pre-Wired 30 Bay Cycle Charging Cart with USB-C



30 Devices



Cycle Charging



Pre-Wired



- Pre-Wired for 30 USB-C Devices
- UL Listed 45 watt USB-C Power Adapters
- All Cables Neatly Clipped in Place
- 15 Minute Cycle Timer
- Full Metal Construction
- 3-point Locking Door w/ Padlock Loop
- 4" Swivel / Directional / Lock Casters
- Ships Fully Assembled (except handle)
- Lifetime Frame Warranty

DIMENSIONS

| | |
|---------|-------|
| Height: | 44.8" |
| Width: | 24.3" |
| Depth: | 25.2" |

CART CAPACITY

| | |
|---------------|---------------------|
| Standard: | 30 Devices at 1.18" |
| Shelf Depth: | 16" |
| Shelf Height: | 10.625" |

WEIGHT

| | |
|------------------|----------|
| Product Weight: | 170 lbs. |
| Shipping Weight: | 176 lbs. |

Specifications subject to change without notice.
92420

MAKING DEVICE STORAGE EASY



AC-COMP-16

Designed to charge and store up to 16 Chromebooks, or Tablets

16 Device Charging Cabinet



16 Devices



Basic Charging



- Full Metal Construction
- Desk or Wall Mountable
- Center Divider with Padlock Loop
- Vented Sides For Heat Dissipation
- Cable Management
- Basic Charging with 2 Power Strips
- Secure Locking Power Adapter Area
- Ships Fully Assembled
- Lifetime Frame Warranty

DIMENSIONS

| | |
|---------|-------|
| Height: | 14.5" |
| Width: | 24" |
| Depth: | 16.5" |

CAPACITY

| | |
|------------------|-------|
| Divider Spacing: | 1" |
| Shelf Depth: | 14.5" |
| Shelf Height: | 11" |

WEIGHT

| | |
|------------------|---------|
| Product Weight: | 37 lbs. |
| Shipping Weight: | 40 lbs. |

Specifications subject to change without notice.
92520



AC-WBCM-1080P

Universal High Definition
USB Webcam with
1080p resolution

Plug-and-Play Webcam



**INSTALLS
FAST**



**HIGH
DEFINITION**



**WIDE
ANGLE LENS**



- True 1080P Resolution at 30 Frames per Second
- 90° Wide Angle Lens
- Built-In Microphone
- Fast, Driver-less Installation
- Compatible with Most Video Meeting Apps
- Built-In Tripod Mount 1/4" -20
- One Year Warranty

DIMENSIONS

| | |
|-------------|---------|
| HEIGHT (IN) | 3.2" |
| WIDTH (IN) | 4.3" |
| DEPTH (IN) | 3.9" |
| WEIGHT | .25 lbs |

HARDWARE

| | |
|-------------|-------------|
| RESOLUTION | 1080P / 2MP |
| SENSOR SIZE | 1/3" |
| FRAME RATE | 30 FPS |
| MICROPHONE | BUILT-IN |

| | |
|---------------|-------|
| LENS | 3.6mm |
| VIEWING ANGLE | 90 ° |
| CORD LENGTH | 5 FT |

Specifications subject to change without notice.
82420