



newline

CONNECT. CREATE. COLLABORATE.

www.newline-interactive.com



newline

WE HELP YOU
MAKE AN IMPACT
IN THE CLASSROOM

Newline creates the classroom tools of the future. From interactive flat panels that keep students engaged through the lesson, to digital tools that enhance your favorite software, Newline reinvents active learning and classroom communication.

CONNECT. CREATE. COLLABORATE.

WHY NEWLINE?

We believe that truly successful and innovative products should be easy for anyone to use. Each product Newline has introduced follows our principle of simplicity, making each interactive flat panel user-friendly and completely non-proprietary.

Over the years, our goal hasn't changed. We are dedicated to providing solutions for schools that make teaching and engaging their students easier. From our award-winning interactive displays to our innovative whiteboarding software, our products combine cutting-edge technology with simplicity, making every solution easy and intuitive.

Founded to develop interactive solutions that are:

Easy for anyone to walk up and use.

If a solution isn't easy to use, we won't bring it to the market. All of our products are designed with you in mind and it is the key to our success.

Completely Non-Proprietary

We work in your world. No matter what software or hardware you want to use, our solutions give you the freedom to interact how you choose.



RS+ Series

BRING LEARNING TO LIFE.

Capture student interest with the improved RS+ Series. Get your students actively involved in their learning on an 4K ultra-high definition interactive flat panel that lets them work together on the same screen. Bring your lessons to life with a vibrant and vivid focal point for your classroom.

- Superior 4K image quality that lights up your classroom
- Built-in file navigation system with cloud access
- Customizable interface with time-saving shortcuts
- Object recognition helps you work faster



Always Free
Software



Compatible with
All Devices



Easy Wireless
Screen Sharing



Access to the
Cloud



Customizable
Interface



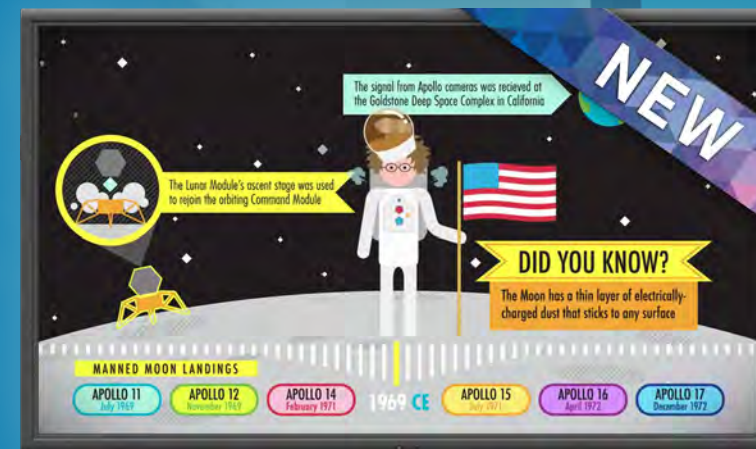
Remote
Management



Embedded
Android 8.0 OS



Object
Recognition



Superior Image
Quality



Remote
Management



Easy Wireless
Screen Sharing



Non-Touch



Access to the
Cloud



Always Free
Software



Control by
Remote



Device
Compatibility

NT Series

STREAMLINE YOUR CLASSROOM

Use vivid innovations created with your needs in mind. Streamline your lessons by focusing on just the tools you need to make an impact with the NT Series, a non-touch display that brings your presentations to life. Don't pay more for features that you won't use.

- Non-Touch 4K display
- Embedded wireless casting from any device
- Built-in file viewer with Cloud access
- Controlled by remote or physical buttons on the display

Product Part Numbers

65" - TT-6519RS
75" - TT-7519RS

86" - TT-8619RS
98" - TT-9819RS

Product Part Numbers

85" - EPR7A085NT-000
98" - EPR7A098NT-000

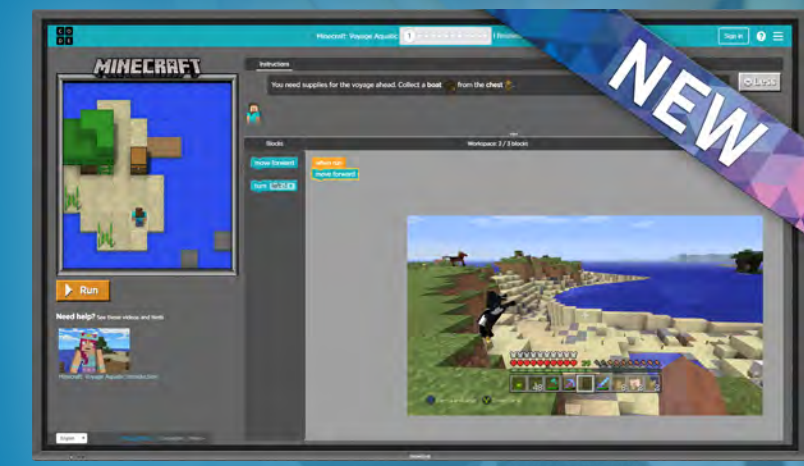


IP Series

EDUCATION WITH ENDLESS POSSIBILITIES

Take your lessons to the next level with the new and improved X Series. Along with a sleeker design, a built-in 4K camera, and a Linux-based OS, the new X Series brings you an easy way to contact to experts all over the world without compromising your school's network security.

- Built-in 4K camera and microphones for an all-in-one design
- On-board computer included with each display
- Be heard with noise cancellation and echo reduction
- Linux-based OS keeps your network and data more secure



OPTIMIZED FOR NETWORK SECURITY

The latest wave in technology brings you more effective communication with stronger network security. Connect your students to the world without comprising sensitive information. IP Series brings you better lessons in an all-in-one package that captivates attention.

- Optically-bonded Ultra-High Def (4K) display
- Linux-based operating system provides better security
- Capacitive touch interface gives a smooth writing experience
- Remote management system built into the display



Built-in 4K Camera



Noise Cancellation & Echo Reduction



OPS Computer Included



Always Free Software



Easy Wireless Screen Sharing



Access to the Cloud



Linux-based OS



Compatible with all Devices



Always Free Software



Remote Management



Capacitive Touch Interface



Linux-based OS



Compatible with All Devices



Object Recognition



Easy Wireless Screen Sharing



Access to the Cloud

Product Part Numbers

- 65" - TT-6519IP
- 75" - TT-7519IP
- 86" - TT-8619IP

VN Series

CRISP. CLEAR. ACCURATE.

Take your lessons to the next level and ensure engagement and interest from your students. The VN Series captures student attention on a touch display with an improved viewing angle and best in class image quality with our unique optical bonding technology.

- Optically bonded 4K display
- Smooth and intuitive writing experience
- Multiple I/O ports make connecting easy
- Switch between pen tools with object recognition



Always Free Software



Compatible with All Devices



Optically Bonded Screen



Slim Frame Design



Access to the Cloud



Easy Wireless Screen Sharing



Object Recognition



Superior Image Quality

Model Specs

	RS+	NT	X	IP	VN
Non-Proprietary	✓	✓	✓	✓	✓
Easy to Use	✓	✓	✓	✓	✓
Ultra-High Definition (4k)	✓	✓	✓	✓	✓
Always Free Software	✓	✓	✓	✓	✓
Access to the Cloud	✓	✓	✓	✓	✓
Wireless Casting	✓	✓	✓	✓	✓
Object Recognition	✓		✓	✓	✓
Cameras & Microphones			✓		
OPS Included			✓		
Remote Display Management	✓	✓	✓	✓	✓
Android-based OS	✓				✓
Linux-based OS			✓	✓	
Touch Interface	✓		✓	✓	✓

Product Part Numbers

65" - TT-6518VN
75" - TT-7518VN
86" - TT-8618VN

newline SOFTWARE SOLUTIONS

SOFTWARE TO TRANSFORM YOUR CLASSROOM

Newline Interactive offers several software solutions seamlessly integrated into the full range of our superior interactive displays. These intelligent tools help you connect with your students better, smarter, and faster.

Built for the digital age, these solutions allow you to easily start your lessons and get more students actively involved in class. Wirelessly cast mobile screens to the display, broadcast content to everyone's devices, whiteboard and collaborate with students in real-time, apply mass notifications and centrally manage all of the displays on your network.

With Newline at the heart of every classroom, all of your lessons are raised to a higher level of communication and student engagement.

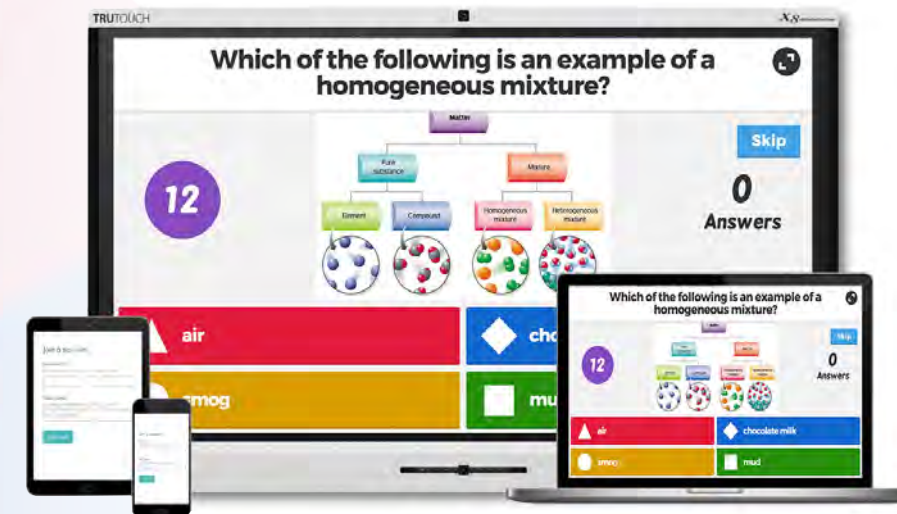
Compatible with:      



newline **CAST**

WIRELESS SCREEN SHARING

Easily share your screen from any device. Newline Cast is simple to use, with one click you can present wirelessly from any network. Control and annotate from the Newline display or from your own device all with the freedom to walk around the room.



newline **BROADCAST**

CONTENT SHARING TO LARGE CLASSES

Tap one button and share your display screen with the students who may not be able to see the display as clearly. They can follow along with the lesson on their own personal screen, reducing eyestrain and making sure everyone gets the most out of the day's lesson.

newline **DISPLAY MANAGEMENT**

REMOTE DISPLAY MANAGEMENT

Centrally manage your Newline interactive displays in any location through a secure and dedicated web portal. Easily manage and deploy apps, configure Newline display settings, use the digital signage features or broadcast messages to all displays.



newline
COMPUTER SOLUTIONS

EXPAND YOUR IMPACT

Education is ever-changing. Support your campus and classrooms with computers that empower your interactive solutions to make teaching easier and learning more engaging.

On-Board Computer (OPS)

PLUG AND PLAY

Fill your display's OPS slot with an on-board computer powered by Intel that brings you all the power of a desktop computer. No more worrying about cables or going through the steps of connecting a laptop or desktop directly to the display.



Android Mini-Computer

ACCESS TO THOUSANDS OF APPS

Connect the X10D to your touch display and download your favorite apps from the built-in Google Play Store. With access to over a million apps, the X10D brings you the programs you need right to your display in an easy to use mini-computer.



OPS MODELS AND SPEC OVERVIEW

	Standard 4K	Good 4K	Better 4K	Best 4K
Part Number	EPR8A65000-000	EPR8A64000-000	EPR8A67160-000	EPR8A64VPU-000
Used With:	X5, X6, X7, X8, X9 VN RS	X5, X6, X7, X8, X9 VN RS	X5, X6, X7, X8, X9 VN RS	X5, X6, X7, X8, X9 VN RS
CPU	i5-6200U - 2.40GHz	i7-7500U - 2.90GHz	i7-7500U - 2.90GHz	i7-7600U - 2.9GHz
GPU	Intel HD Graphics 520	Intel HD Graphics 620	Intel HD Graphics 620	Intel HD Graphics 620
RAM	4GB	8GB	16GB	8GB
Hard Disk	128GB SATA3 SSD	256GB SATA3 SSD	256GB SATA3 SSD	256GB SATA3 SSD
Intel Unite Ready	-	-	-	Yes
USB 2.0	2	2	2	2
USB 3.0	2	2	2	2
LAN	1	1	1	1
HDMI Out	1	1	1	1
Microphone In	1	1	1	1
Line Out	1	1	1	1
Built-in WiFi	802.11b/g/n/ac	802.11b/g/n/ac	802.11b/g/n/ac	802.11b/g/n/ac
OS	Win 10 Pro 64bit (other OS optional)	Win 10 Pro 64bit (other OS optional)	Win 10 Pro 64bit (other OS optional)	Win 10 Pro 64bit (other OS optional)
RAM Upgrades	Up to 16GB	Up to 16GB	n/a	Up to 16GB
Storage Upgrades	Up to 1TB SSD	Up to 1TB SSD	Up to 1TB SSD	Up to 1TB SSD

newline MOBILE STAND SOLUTIONS

EDUCATION WITH MOBILITY

Take your Newline interactive display anywhere on campus with a Mobile Stand. A mobile stand leaves you free to place the display anywhere in the room you like, or take it from classroom to classroom.

newline
Mobile Stand

Adjust the height of your display so that your students can touch and interact directly with the screen.



SKU: EPR8A50500-SQR*
*Fits all Panel Sizes

newline
TRULIFT Mobile Stand

Motorized stands let you adjust your display height with a remote or electronic option, giving you easy visibility.



SKU: EPR8A60060-000*
*Fits all Panel Sizes

MOORECO
iTeach Stand

With a robust mobile stand, move your display around your classroom or campus with ease.



SKU: EPR8A70080-000*
*Fits all Panel Sizes

MOORECO
iTeach Motorized Stand

Control the height of the display on a motorized mobile stand with a convenient electronic lift option.



SKU: EPR8A70070-000*
*Fits all Panel Sizes

BalanceBox
Mobile Stand

This mobile stand's compact design lets you move your interactive display up and down with just your fingertips.



SKU: EPR8A88555-000°
SKU: EPR8A88666-000†
°Fits 55" - 80" Panels
†Fits 80" - 98" Panels

newline WALL MOUNT SOLUTIONS

EDUCATION WITH MOBILITY

Mount your display to the front of your classroom with a wall mount. Sturdy wall mounts let you keep any size panel easily visible on the front of your room.

newline
Wall Mount

Keep your display sturdy on the wall with the standard Newline wall mount.

The light, compact design makes it easy to install while providing strength and durability.



SKU: EPR8A50600-000
*Fits 55" - 86" Panels

BalanceBox
Wall Mount

Move the display up and down with its effortless high-low adjustment.

Easily mount your display to the front of the classroom and keep it locked in place for daily use.



SKU: EPR8A50980-000
*Fits 98" Panels

SKU: EPR8A88700-000
*Fits 55" - 80" Panels

SKU: EPR8A88900-000
*Fits 80" - 98" Panels

SERVICE, WARRANTY, & TRAINING

Newline’s commitment to quality and your organization’s success extends past the initial purchase. We provide:

Lifetime
Service &
Support



Best
in Class
Warranty



Superior
Training



On-Demand Technical Support

Newline provides continuous U.S. based technical phone support, email support through our Helpdesk Ticket System, and remote desktop support. You will always have an answer at your fingertips by using our online support knowledgebase.

Be in control of finding the answer to any question, any time, with our completely comprehensive self-help system.

Advanced Replacement Warranty

5 Year All
Inclusive
Warranty



Two-Way
Free RMA
Shipping



Always
Advanced
Replacement



Training Geared for Ease of Use

One of the most important factors in achieving success is having a team that is knowledgeable and comfortable with technology.

Newline provides quality instructional training opportunities for all staff to meet the needs of a growing and changing workforce. The easier our display is for your team to use effectively, the more you can succeed.

Our Partnerships

Newline is committed to providing the best user experience possible, and sometimes we can’t do everything ourselves. So we partner with other great technology companies to create innovative products that make using our interactive solutions easier than ever!



Newline’s X Series is an Intel approved Market Ready Solution that provides customers with an all-in-one videoconferencing solution.



Microsoft Windows Whiteboard leverages the power of touch through Newline to bring lessons and whiteboarding sessions to life.



FlatFrog’s InGlass Technology powers several of Newline displays for a seamless and natural writing experience.



Logitech provides camera and microphone options that easily integrate with all of Newline’s touch solutions.



Adjust your Newline display with BalanceBox’s options for wall mounts and mobile stands, some even motorized.



Document cameras by Lumens connected to Newline touch displays help teachers get more done in the classroom.



Enhance your Newline interactive touch display with a versatile Mooreco mobile cart solution to provide you mobility.



Provide financing solutions to your Newline customers through TEQlease, giving additional purchasing options that work best for them.



Peerless-AV provides industry leading fixed mount and mobile stand solutions designed to improve your Newline experience.



Find a great, stylish AV setup with Salamander, who create a variety of mounting solutions to hold your display.



T1V provides a hardware wireless casting solution, along with other multi-touch applications that work with Newline displays.



Free your Newline display from the wall by putting it on one of Conen’s several mobile stand options.

FROM OUR CUSTOMERS...

DON'T JUST TAKE OUR WORD FOR IT...



Steve Doughty
Eisenhower Middle School

"I have been absolutely blown away by the quality and features of the product! Adding the TRUTOUCH system capabilities to our classroom has made a lasting, permanent and positive impact on the educational experience at our school!"



Cynthia Herndon
Roman Catholic
Diocese of Dallas

"Newline's products are engaging our students in classrooms across the Diocese and our teachers love them for their ease-of-use. Besides their outstanding products, we also value the level of technical support and on-site training that Newline provides to us whenever we need it."



Kenneth Daigre
Port Arthur Independent
School District

"The teachers went bananas when they saw the TRUTOUCH in use. We're so excited to have this level of technology for our classes because they never thought we'd be able to afford it."



Kelley Watson
MacArthur High School
Entrepreneurship Program

"Using the TRUTOUCH system allows the students to show their work on a larger surface, annotate anything that they need to make changes on, and it involves a group setting."



Ed Kemnitzer
East Williston
School District

"Newline has enabled us to provide a seamless experience to kids without interference. The panels are not in the way, they are part of the process. All of our teachers have found their niche and love how easy it is to use the panel."



Karina Garcia
St Bernard of Clarivaux
Catholic School

"Our TRUTOUCHs are very easy to use and that means more teachers and students are really using them! We are so pleased that we have these tools in our classrooms!"



David Flynn
Macon County
School System

"We chose the TRUTOUCH from Newline after trying out a couple options. All our classrooms have SMARTboards but as the older ones were needing replacing, it was clear it was time to move to another device. As a G Suite district and invested in Chromebooks, the TRUTOUCH was a clear winning choice. The Chrome compatibility, advanced features, and their support have made this a real winner for the classrooms in our district."

AWARDS & RECOGNITIONS

TRUSTED BY MANY

PROUDLY SERVING SCHOOL DISTRICTS COAST TO COAST

	2015	 Entrepreneur of the Year Finalists	 Infocomm 2015 Hot 50 Product	 CBS Eye on Technology Appearance					
		 Best New Interactive Flat Panel - ISE	 Infocomm 2016 Best in Show	 Entrepreneur of the Year Finalists	 Best Office Technology Product Finalist	 #1 Fast Tech Company	 AV Awards 2016 Finalist		
	2017	 Infocomm 2017 Best in Show	 Entrepreneur of the Year Finalists	 AV Awards 2017 Finalist	 Top 5 Fast Tech Companies	 #10 of the Dallas 100	 Ranked #149 in 2017 Inc. 500		
		 AV Awards 2018 Finalist	 Top 5 Fast Tech Companies	 Ranked #293 in 2018 Inc. 500	 #6 of the Dallas 100	 Ranked #81 of the Deloitte Fast 500			
	2019	 TCEA 2019 Best of Show	 Intel IoT Solutions Alliance Partner of the Year	 Entrepreneur of the Year Finalists	 EdTech Awards Cool Tool Awards Finalist	 #377 Growjo Fastest Growing TX Companies	 Ranked #406 in 2019 Inc. 500	 Ranked #81 of the Deloitte Fast 500	

AND THOUSANDS MORE!



newline

CONNECT. CREATE. COLLABORATE.

101 E Park Blvd, Suite 807
Plano, TX 75074

1-888-233-0868
www.newline-interactive.com

newline



RS+ SERIES

ENHANCED COLLABORATION

Collaborate without limits with the RS+ Series, an interactive touch display designed around hassle-free communication. This powerful interactive display runs on an embedded Android 8.0 operating system. No more buffering or delays, get right to work taking notes on an impressive digital whiteboard.



Embedded
Android 8.0



Remote
Management



Access to
the Cloud



Seamless
Wireless Casting



Object
Recognition



Compatible with
all Devices

Annotate

Write over anything on the screen, from an embedded whiteboard to a connected computer.

Share

Connect wirelessly to the display to share your screen or access your Cloud storage and save files directly there.

Meet

Enhance meetings on a display that is fast to load and makes getting to work more efficient.

Learn

Capture student attention on a vivid 4K display that brings your lessons and presentations to life!



Commercial
Businesses



Higher
Education



K-12
Schools



Government &
Law Enforcement

[Learn More](#)

newline



NT SERIES

STREAMLINED COLLABORATION

Bring your presentations to life with the NT Series, a large format commercial display that lets you focus on just the tools you need to succeed. Save on cost with a non-touch display experience. Rated 24/7, this commercial grade display works as hard as you do.



Non-Touch
Display



Remote
Management



Access to
the Cloud



Seamless
Wireless Casting



Superior
Image Quality



Commercial
Grade

Annotate

Write over anything on the screen, from an embedded whiteboard to a connected computer.

Share

Connect wirelessly to the display to share your screen or access your Cloud storage and save files directly there.

Meet

Enhance meetings on a display that is fast to load and makes getting to work more efficient.

Learn

Capture student attention on a vivid 4K display that brings your lessons and presentations to life!



Commercial
Businesses



Higher
Education



K-12
Schools



Government &
Law Enforcement



Hospitals
& Medical

[Learn More](#)

newline



IP SERIES

OPTIMIZED FOR ENTERPRISE SECURITY

Never worry about your network being vulnerable again. The IP Series brings you a secure interactive display with a seamless touch experience, letting you focus on communication and collaboration. Connect your team to the world without compromising sensitive information.



Linux-based
Operating System



Compatible with
all Devices



Use Any
Software



Object
Recognition



Capacitive
Touch



Superior
Image Quality

Annotate

Write over anything on the screen, from an embedded whiteboard to a connected computer.

Share

Connect wirelessly to the display to share your screen or access your Cloud storage and save files directly there.

Meet

Enhance meetings on a display that is fast to load and makes getting to work more efficient.

Educate

Capture attention on a vivid 4K display that brings your lessons and presentations to life!



Commercial
Businesses



Higher
Education



K-12
Schools



Government &
Law Enforcement

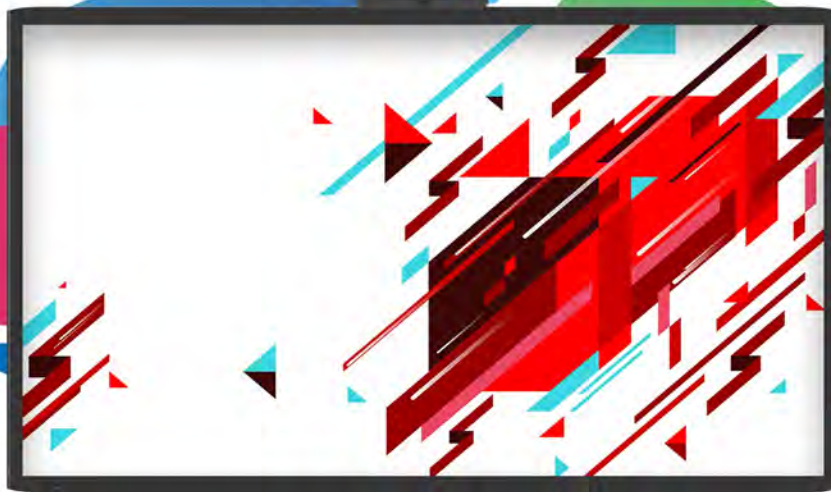


Hospitals
& Medical

[Learn More](#)

coming
soon

newline



X SERIES

COLLABORATION WITH ENDLESS POSSIBILITIES

Take your collaboration to the next level with our reinvented award-winning X Series. A Linux-based OS that keeps your touch display and your network secure, and your ideas safe. With a sleeker design, and integrated 4K camera and noise-cancelling microphone, the new X Series connects you to the world.



Linux-based
Operating System



Compatible with
all Devices



Use any
UC Software



Integrated
Camera & Mic



Capacitive
Touch



OPS Computer
Included

Annotate

Write over anything on the screen, from an embedded whiteboard to a connected computer.

Share

Connect wirelessly to the display to share your screen or access your Cloud storage and save files directly there.

Meet

Enhance meetings on a display that is fast to load and makes getting to work more efficient.

Video

Connect with anyone, anywhere. Use the UC software of your choice to stay in touch with remote teams.



Commercial
Businesses



Higher
Education



Government &
Law Enforcement



Hospitals
& Medical